

Care Instructions -

1. Ensure guy ropes are out at all times during use
2. Never pack your tent away wet. If you must take your tent down when wet, ensure that it is dried completely as soon as possible to prevent mildew forming
3. If mildew does form on your tent, wash off with warm water and a soft brush to prevent further growth, do not use soap or detergents
4. Do not use an open flame inside your tent. The fabric has been treated with a fire retardant but is in no way fire proof
5. Clean all pegs and poles before storing
6. This tent is not designed to withstand storm conditions. During strong winds, it is recommended that the tent be taken down
7. Do not leave your tent pitched unnecessarily for extended periods of time, UV light damages the fly and will shorten the life of your tent

Condensation -

It is important that lower vents are opened at all times to reduce the risk of condensation. During humid or damp conditions, it is recommended that inner door covers are opened to expose the mesh layer to allow additional airflow throughout your tent.

Do not use foam swabs or non bonded mats directly on the tent floor. This will cause condensation between the mat and floor and if not dried out can lead to mildew foaming.

4 Year Tent Guarantee -

Please take time to read about the protections we offer you

All our tents come with a guarantee designed to protect you as our valued customer. Flow Imports Ltd, the makers of Zempire Camping Equipment tents, will repair or replace this tent, at their discretion should it fail due to faulty materials or manufacture for a period of 4 years from the date of sale.

The Guarantee is subject to the following conditions:

1. The Guarantee only applies to an original purchaser who purchased this tent from an approved retail outlet
2. The Guarantee does not apply if the tent has been used for anything other than reasonable personal camping use. Commercial use (e.g. rental) or continuous use as a residence are expressly excluded
3. Damage due to normal wear and tear, accident, acts of God, negligence (other than by Flow Imports Ltd), failure by the purchaser to ensure instructions for setting up and care are observed, deterioration due to abnormal exposure to ultraviolet light, insect or mildew attack, or any other cause reasonably beyond the control of Flow Imports Ltd are not covered
4. If redress is sought under the terms of this Guarantee, then the tent must be returned by the purchaser to the outlet from where it was purchased within the Guarantee period, in a clean, dry state and with proof of purchase
5. All transport costs and any other indirect costs are excluded from the Guarantee.
6. Flow Imports Ltd reserves the right to make a reasonable charge for repairs which it determines are not within the scope of the Guarantee
7. The Guarantee does not limit, modify or exclude any rights under any law if doing so would contravene that law or make any part of this Guarantee invalid. However, Flow Imports Ltd:
 - a) excludes (to the extent permitted by applicable law) all conditions and warranties that might otherwise be implied; and
 - b) limits its liability for breach of any such condition or Guarantee that it cannot exclude together with its liability under the Guarantee, to repairing or replacing the Goods or paying the cost of having the Goods repaired or replaced (at Flow Imports' option).

This tent has been made with meticulous care and attention to detail. Providing it's properly looked after and correctly stored, it will help you enjoy all that nature has to offer for years to come.

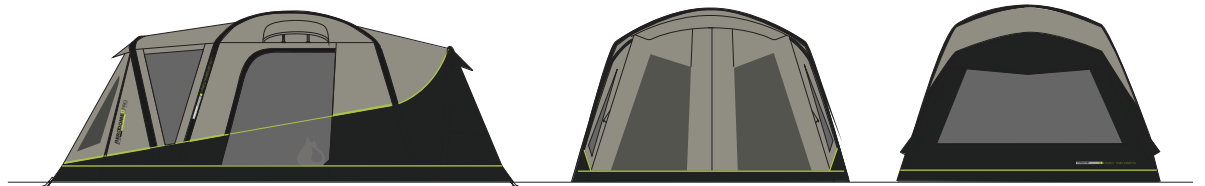
Get out more - you owe it to yourself.

For a detailed description of all the features and specifications of this product please visit our website.

WWW.ZEMPIRECAMPING.COM

AERODOME PRO

Zempire CAMPING EQUIPMENT PRO SERIES



1 Test run

Practice pitching your tent at home to ensure you understand the process

2 Siting

When finding a site for your tent, try to find an area that is sheltered, flat, and free from sharp objects. If possible position your tent with the front door facing away from the prevailing wind. Also try not to pitch your tent under trees as falling branches can damage the tent and falling sap can damage the fabric

3 Ground sheet

To protect your tent from dirt and damage it is recommended to use a Zempire® Ground sheet. Ground sheets not only protect your tent floor but also make pack down a faster and cleaner process. The ground sheet should be pegged down in the correct position first with the tent placed on top. Zempire® ground sheets are slightly smaller than the size of the tent floor to ensure water does not collect between the two layers.

4 Unpacking

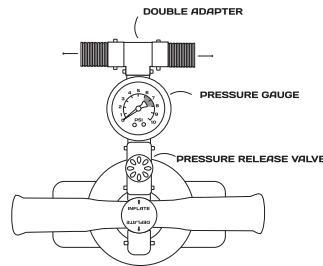
When you take your tent out for the first time take a moment to see how it is packed or take a photo on your phone. This will help you when it comes to packing your tent away. Separate and identify the different parts in your tent. Your inner tent will be pre-attached and does not require removing when taking the tent down. The package should include the following

- Tent Fly
- Pump
- Pressure release valve
- Pressure gauge
- Pegs
- Storage Hamock
- Tent Inner (Pre-attached)
- Guy Ropes (Pre-attached)
- Additional guy ropes

Assemble the aluminium brow pole. The sections are joined together with shock cord so just needs slotting together. Ensure that the sections do not snap together and each section inserts fully into the adjoining pole

5 Pump Setup

Your Zempire® double action pump includes a pressure gauge and pressure release valve to ensure that the poles are inflated to the correct level. A double adapter is also included that allows two poles to be inflated simultaneously. The pump accessories should be assembled in the following configuration:



6 Layout

Unroll the tent fly with the floor facing down. The large door with 4 PVC windows is located at the front of the tent. Peg out the 4 corners of the sewn in ground sheet ensuring there is significant tension between and the floor sits as flat as possible. For best results pegs should be angled away from your tent at 45°

7 Airflow

To enable significant air to enter tent during the pitching process, all door and window covers should be opened. It is important that the mesh doors themselves remain closed during the pitching process to ensure the tent holds its correct shape during inflation and is not over tightened causing damage.

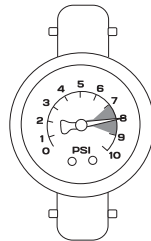
8 Valve attachment

The external inflation valves are located under the rain sock on one side of each pole length. Before inflating, the valves will need to be attached the pole opening. Remove the valve cap and screw in the remaining section into the pole opening. It is important that the valve is not cross threaded and is screwed firmly.

9 Inflation

Begining with the main cross pole, then the front and rear pole, inflate the tubes to between 7 and 9 PSI. The pressure release valve will "honk" when 9 PSI is reached. It is important not to over inflate the tubes. It is recommended that during very hot weather 7 PSI is used to provide room for expansion during the day. In cooler or windier conditions 9 PSI is recommended.

As each pole inflates it may be necessary to support the centre of the pole until they assume their correct shape. It is also a good time to ensure that the base of each pole is sitting correctly on the Velcro patches. Poles can sometimes move off the Velcro during the pitching process.



10 Setting the floor

It may be necessary to align the base of each pole so that the floor sits flat and taught. You may also need to re align the corner pegging points so the floor sits flat. The base of the front door zips should align with the side of the tent. Ensure the front door is completely closed when pegging out the front of the tent.

11 Pegging

Peg the remaining peg loops around the tent. Durable steel pegs are included with your tent which will be suitable for the majority of conditions. However, if you are camped at a rocky or loose sandy location it may pay to purchase more specialized pegs. A range of specialized Zempire® pegs are available from your local dealer.

12 Anchor Fins

Anchor fins are located at each end of your tent. These webbing straps are essential for the stability of your tent. They should be firmly pegged out at a 45° angle. In windy conditions or when camping soggy ground it may pay to double peg the Steel "O" rings at the base of each webbing. Anchor webbings should be used at all times.

13 Vents

To reduce condensation it is important that vents are opened at all times. Your tent is designed with High / Low ventilation system that relies on all vents to be opened to achieve good air circulation. If you find condensation building up on the inside of your fly it is recommended that the front 360° door cover is opened to allow maximum airflow. Zempire® tents have a large amount of ventilation options, however, in certain conditions condensation may occur. Condensation and its affects are not covered by warranty.

14 Guy Lines

Guy lines are pre attached on all Zempire® tents. It is recommended that guy lines are used at all times. It is important not to over tighten guy lines. They should sit taught but should not distort the shape of the tent.

15 Inner Pods

Although the main inner bedrooms are pre-attached, it will be necessary to tension each of the corner webbing straps after the tent is pitched. These should be loosened before taking the tent down.

Deflation

- Close all the mesh doors leaving the covers open to allow air to escape the tent
- Loosen off the inner pod webbing straps
- Unpeg all guy ropes and roll up to ensure they do not get tangled during packing
- Unpeg the anchor fin webbing straps
- Unpeg the peg points excluding the 4 corners. Clean and dry pegs before storing in the bag
- Open the valves on each pole. Wait for all the air to be expelled
- Unpeg the 4 corners of the tent, clean and pack the pegs
- Lay the carry bag at one end of the tent. Fold the tent to 2/3s of the length of the bag. The tent should be folded from the "non-valve" side to the "valve-side" to help expel the final amount of air from the tubes.
- Place the Pump, and Peg bags on top of the folded tent at the bedroom end. Roll towards the door end of the tent. It may take more than one roll to expel all the air out of the tent.
- Using the webbing straps tension the tent and stand on its end.
- Pull the Carrybag over the tent, tipping the tent over and tensioning the draw cord.
- The Carrybag is over sized to ensure easy packing.

UV Degradation

Tent fabrics can be weakened from prolonged exposure to sunlight. Under normal holiday use your Zempire® tent will give you many years of camping enjoyment, but use in extended periods of strong sunlight will cause degradation. It is recommended that during periods of strong sunlight a Zempire® roof cover is used to help protect from UV damage. UV Degradation is not covered under warranty. The warranty does not cover permanent sites, displays or for commercial purposes.